

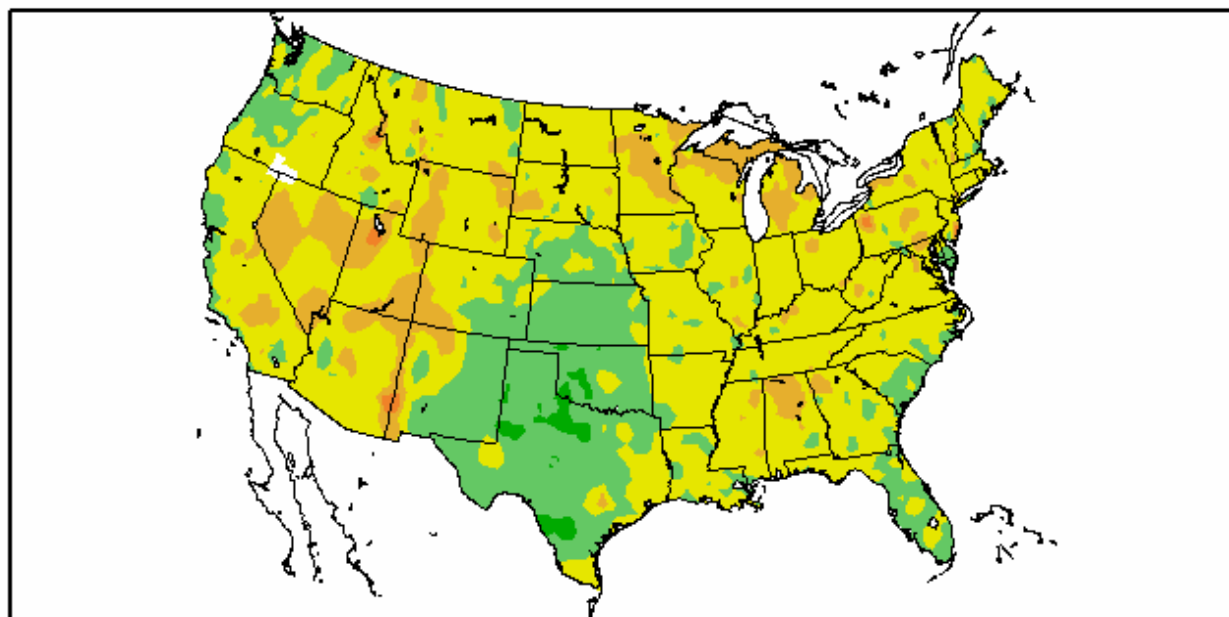
The Pennsylvania Observer



Outlook

Experimental Long Range Outlook for Pennsylvania: July 2007 – August 2007

Departure from Normal Temperature (F)
6/1/2007 – 6/30/2007

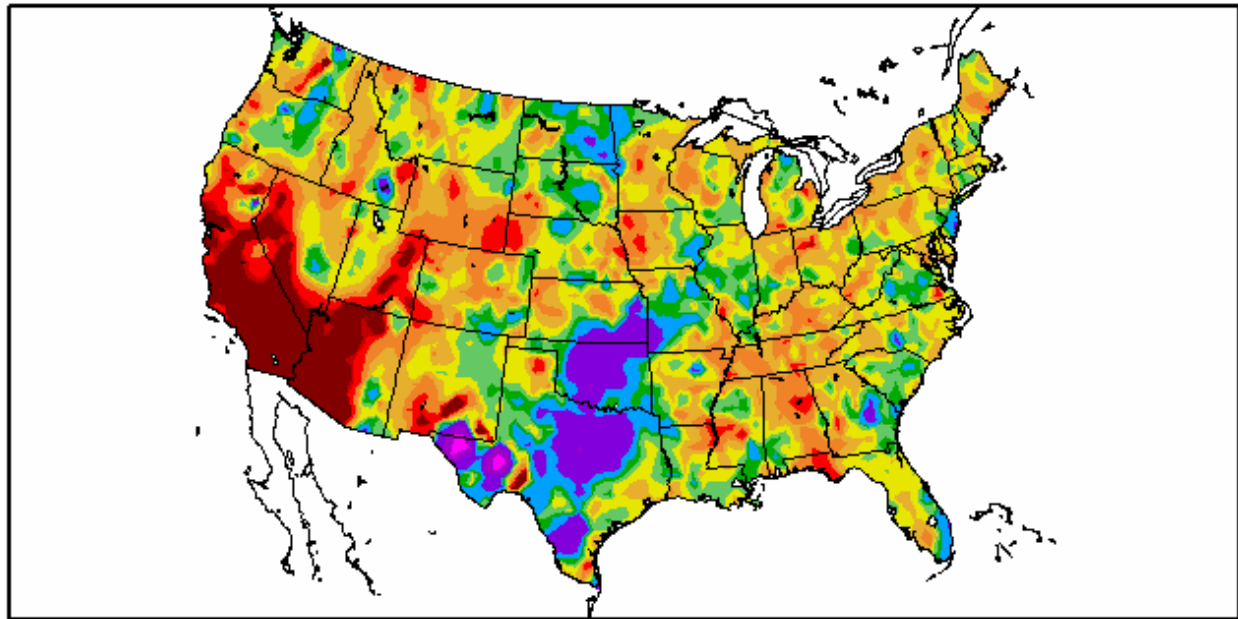


Generated 7/1/2007 at HPRCC using provisional data.

NOAA Regional Climate Centers

June, 2007 was unusually cool from the central Plains to the southern Rockies and in the Pacific Northwest and parts of the Southeast Coast. The warmest weather was found in the upper Great Lakes, parts of the Tennessee Valley and sections of the Great Basin.

Percent of Normal Precipitation (%)
6/1/2007 - 6/30/2007



Generated 7/1/2007 at HPRCC using provisional data.

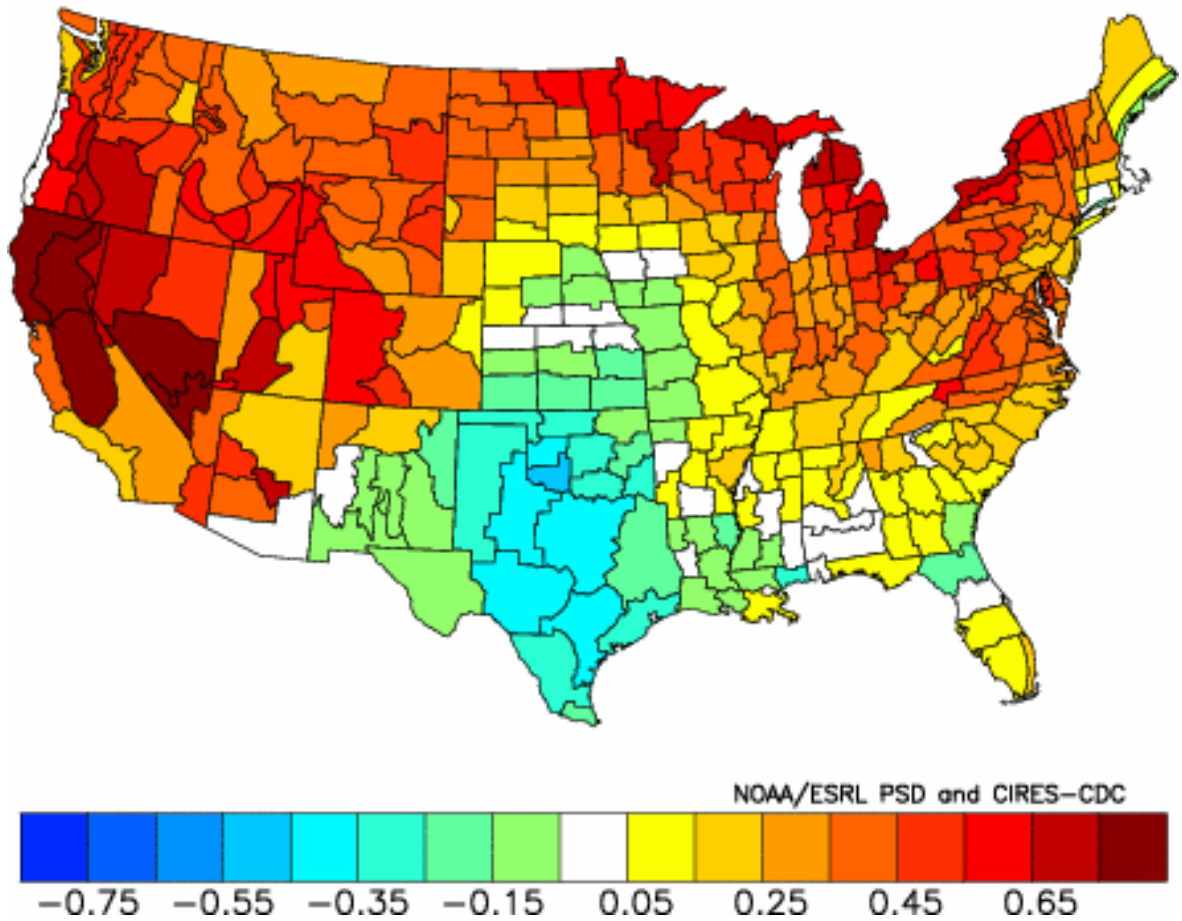
NOAA Regional Climate Centers

June, 2007 was abnormally moist from southwest Missouri to the Big Bend of Texas. It was also rather damp in the Dakotas and in sections of the interior Northwest. The Southwest was parched as was a large section of the central and eastern Gulf States, Tennessee Valley and the interior Northeast.

When the previous conditions were compared with previous June's on a climate division level, the following years were selected as close analogs: **1896, 1919, 1921, 1933, 1959, 1961, 1987, 1996, 2002**

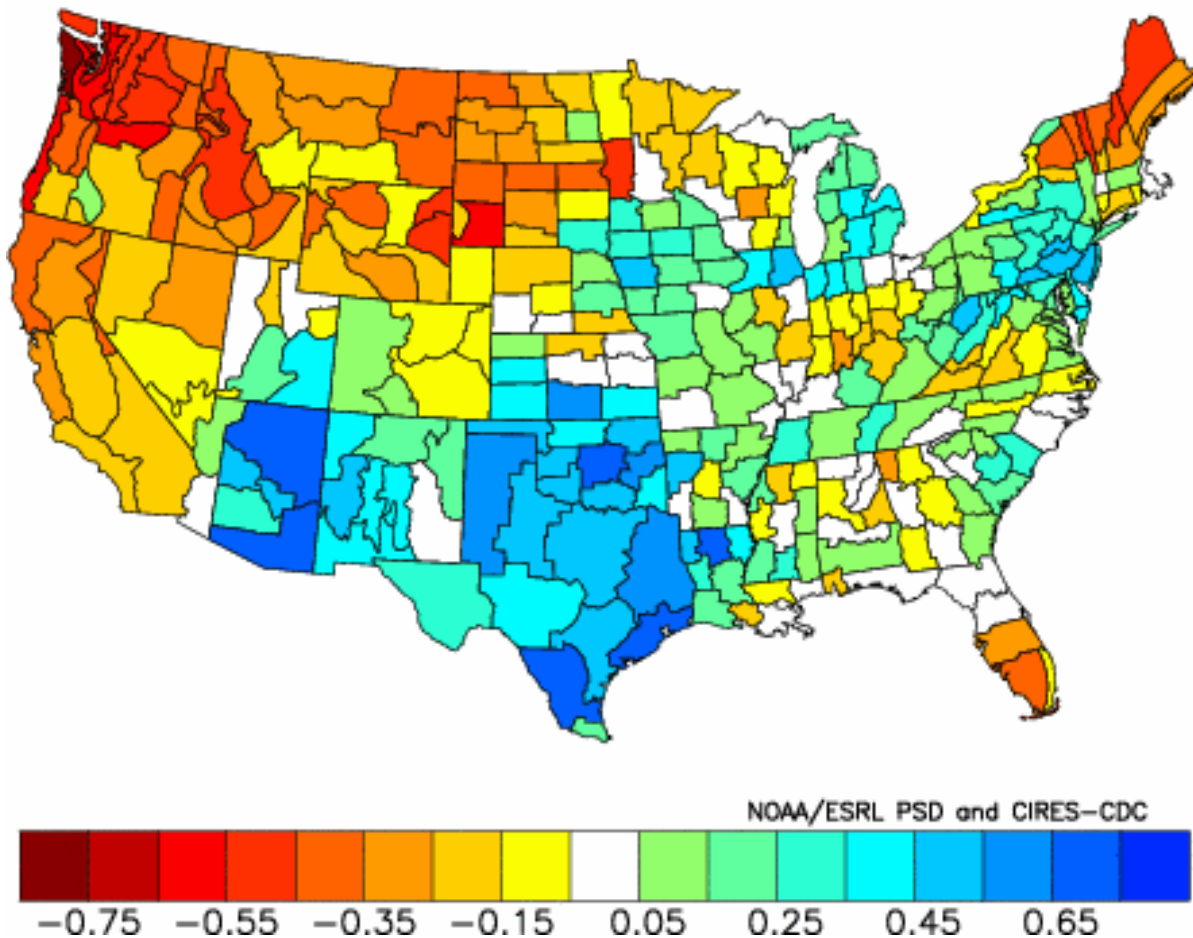
The following are the conditions nationwide during the July-August that followed:

Composite Standardized Temperature Anomalies
Jul to Aug 1896,1919,1921,1933,1959,1961,1987,1996,2002
Versus 1895–2000 Longterm Average



The map suggests that temperatures will be below normal during the next two months from southern Kansas and western Missouri, south into Oklahoma, Texas, Louisiana and portions of New Mexico. Meanwhile, the rest of the nation could see above average temperatures, especially from northern California to Las Vegas.

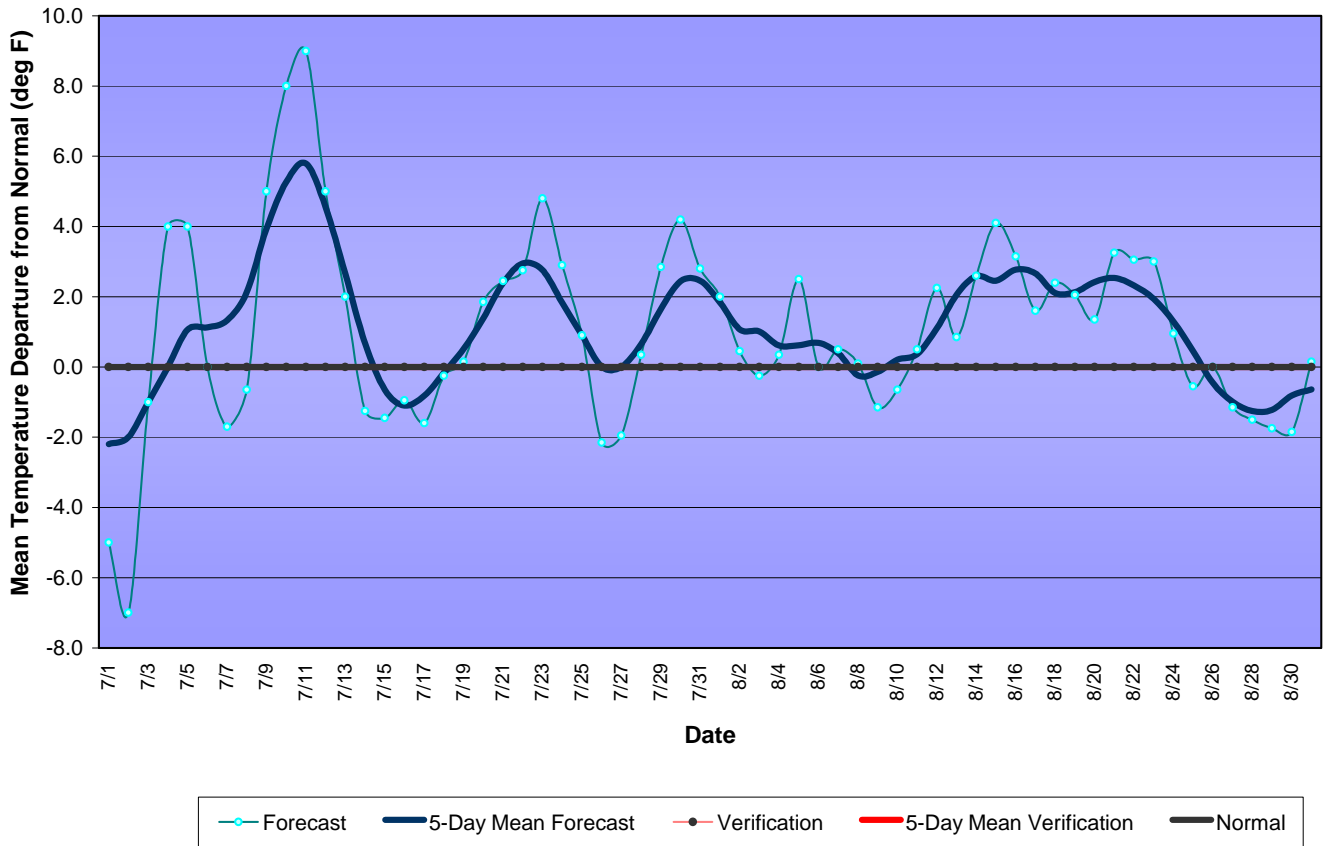
Composite Standardized Precipitation Anomalies
Jul to Aug 1896,1919,1921,1933,1959,1961,1987,1996,2002
Versus 1895–2000 Longterm Average



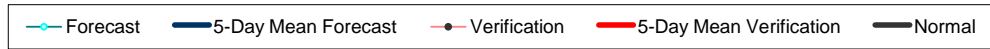
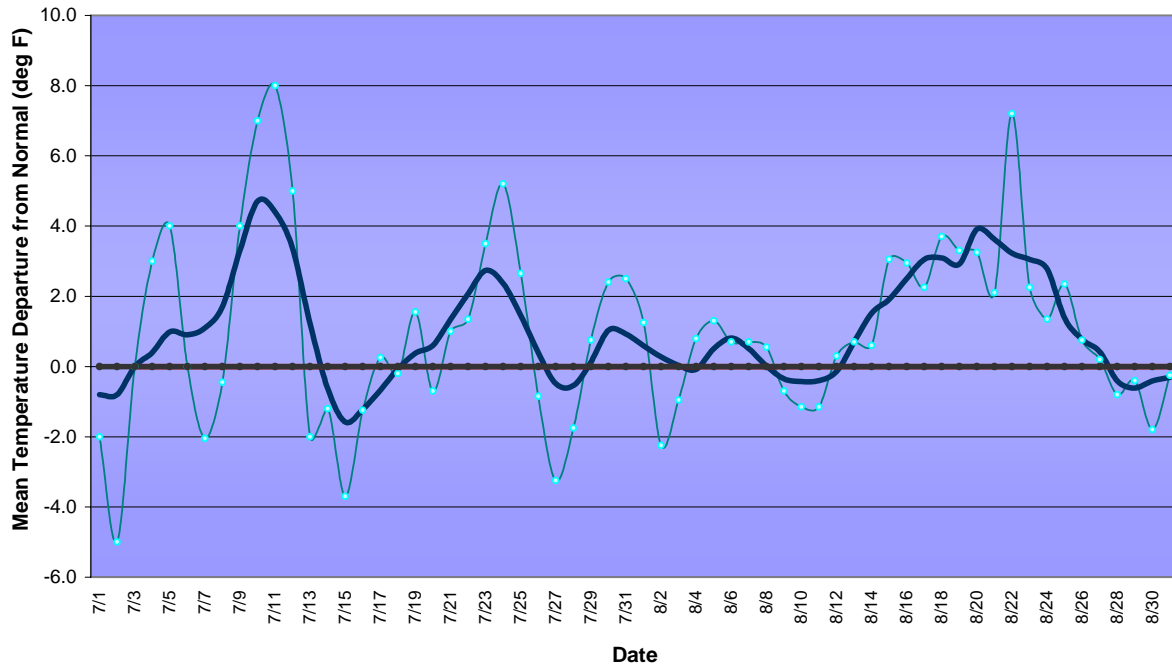
Unfortunately this long range forecast calls for plenty more rain in areas of Texas and Oklahoma that have seen large floods over the past month. In the Pacific Northwest, conditions should be much drier than normal while much of the Mid-Atlantic could get some much need rainfall.

Applying those same analog years produced the following daily departures from normal for three regions of Pennsylvania for the period from July 1- August 31.

Western Pennsylvania Temperature Forecast July - August 2007



Central Pennsylvania Temperature Forecast July - August 2007



Eastern Pennsylvania Temperature Forecast July - August 2007

