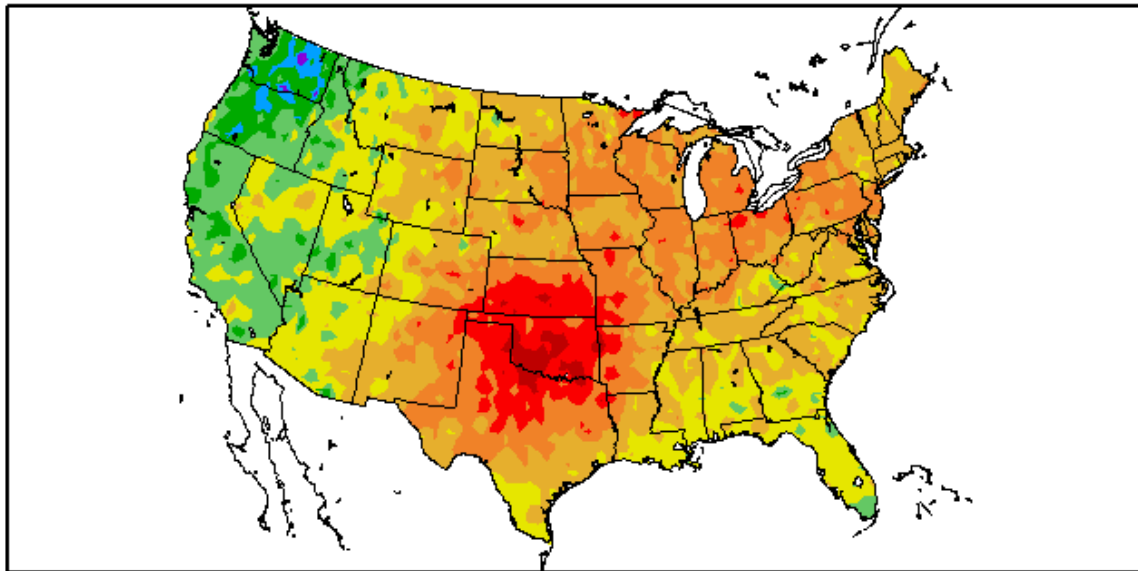


# *The Pennsylvania Observer*



Departure from Normal Temperature (F)  
7/1/2011 - 7/26/2011

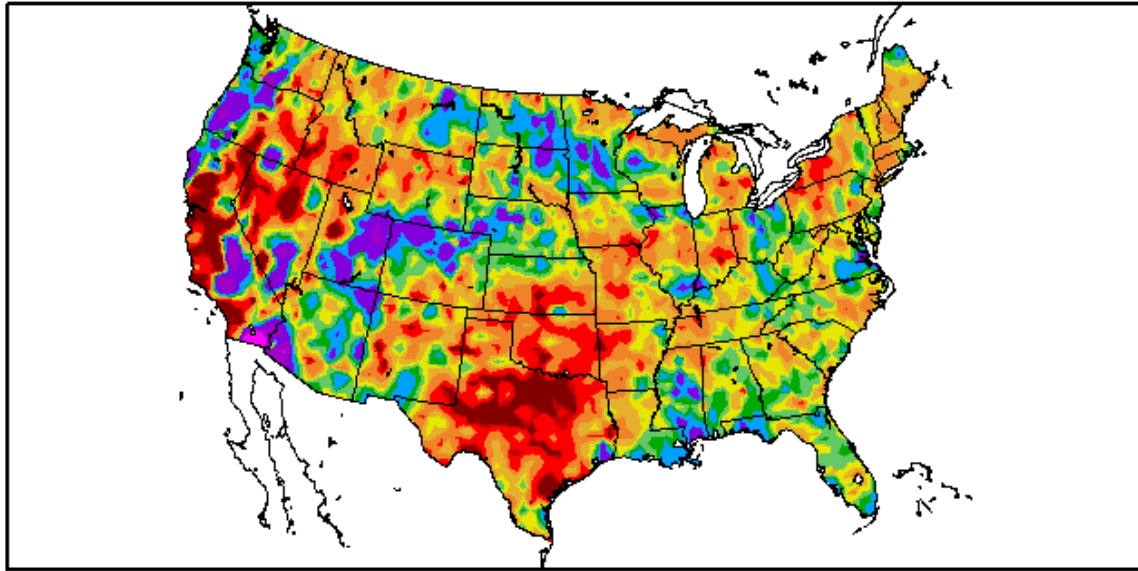


Generated 7/27/2011 at HPRCC using provisional data.

Regional Climate Centers

The anomalies for July have been unusually large for a mid-summer month. The warm anomaly encompassed the region from the southern Plains to the eastern Great Lakes while the cool anomaly was confined to the Pacific Coast and the Northwest.

Percent of Normal Precipitation (%)  
7/1/2011 - 7/26/2011



Generated 7/27/2011 at HPRCC using provisional data.

Regional Climate Centers

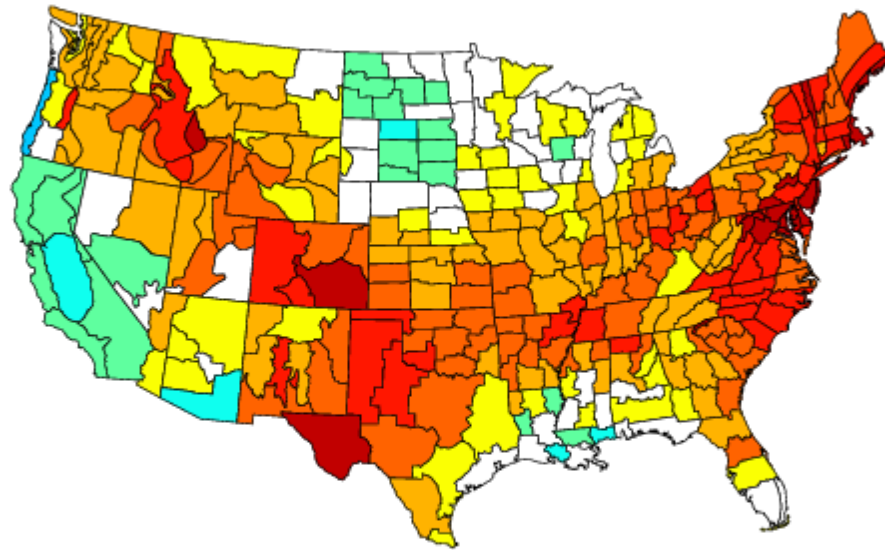
As is typical in the summer, precipitation anomalies were piecemeal in July. The two largest area anomalies that were selected include a dry region in the southern and central Plains and an odd shaped wet region from the central Rockies into the western and northern Plains.

When comparing these anomalies with climate division data (1895-present), the following years had the most matches for area and type of anomaly.

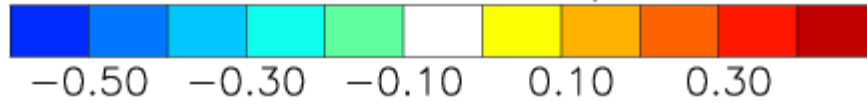
Analogue Years: 1934, 1935, 1983, 1901, 1986, 1961, 1999, 1930, 1954, 1966

Below are the conditions nationwide during the August-September that followed:

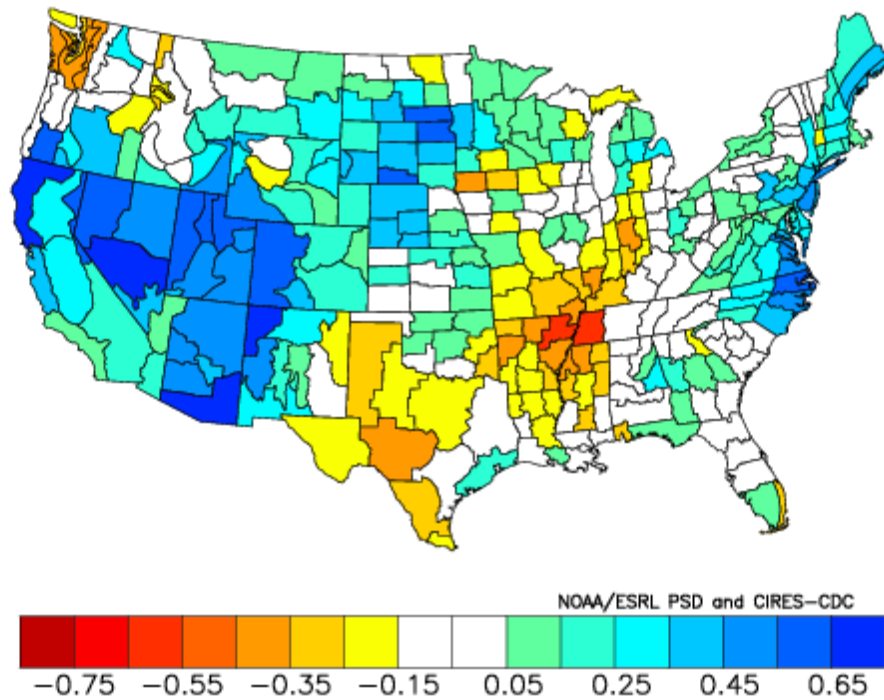
Composite Standardized Temperature Anomalies  
Aug to Sep 1934,1935,1983,1901,1986,1961,1999,1930,1954,1966  
Versus 1895–2000 Longterm Average



NOAA/ESRL PSD and CIRES-CDC



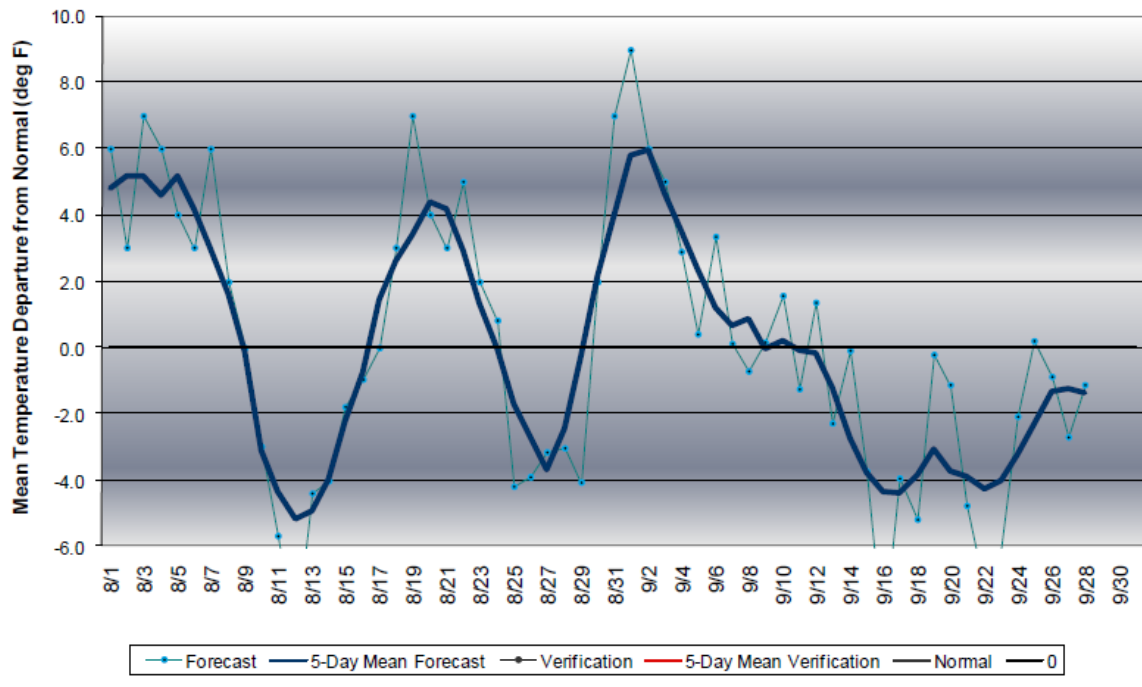
Composite Standardized Precipitation Anomalies  
Aug to Sep 1934,1935,1983,1901,1986,1961,1999,1930,1954,1966  
Versus 1895–2000 Longterm Average



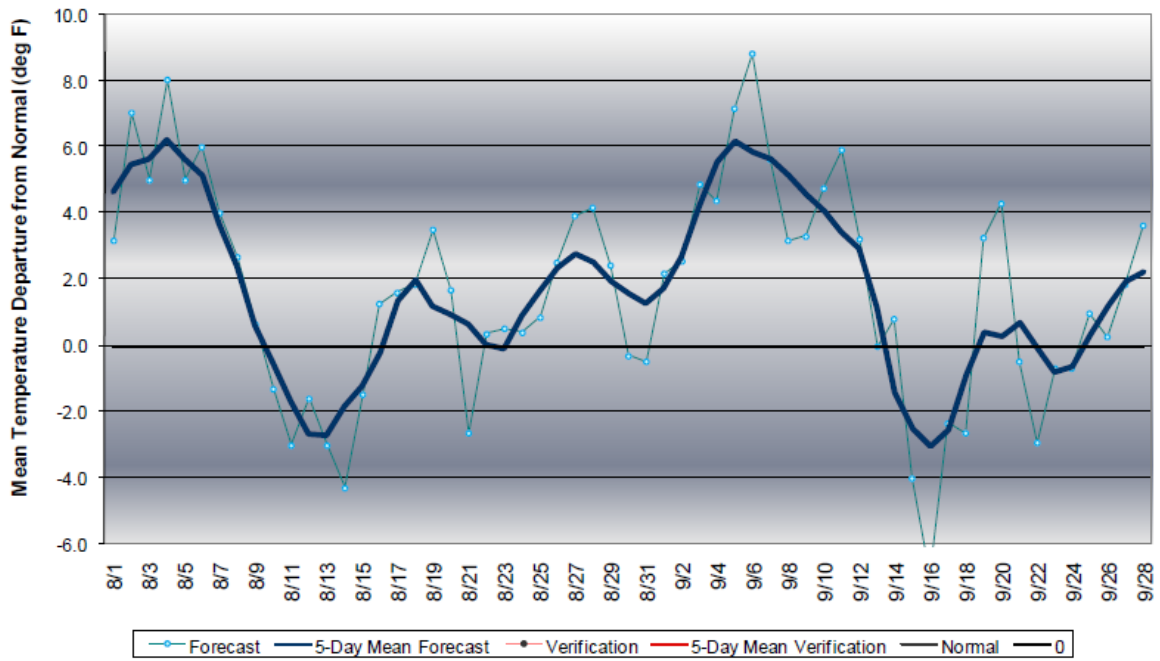
---

Wet weather along the East Coast may indicate several brushes with tropical systems during this period. The wet in the Southwest and central Rockies would be tied into a very active monsoon. A persistence of wet weather is expected in the northern Plains.

### Western Pennsylvania Temperature Forecast August-September 2011



### Central Pennsylvania Temperature Forecast August-September 2011



### Eastern Pennsylvania Temperature Forecast August-September 2011

