

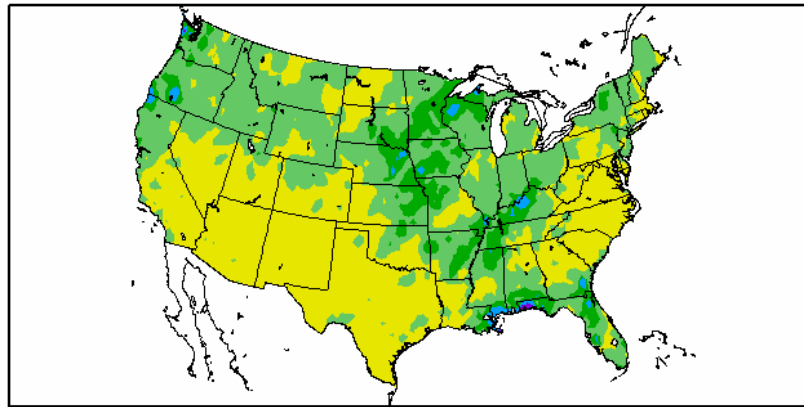
# *The Pennsylvania Observer*



## Outlook

**Experimental Long Range Outlook for Pennsylvania: November 2007 – December 2007**

Departure from Normal Precipitation (in)  
10/1/2007 – 10/24/2007

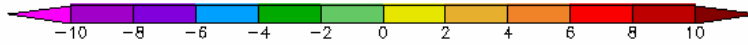
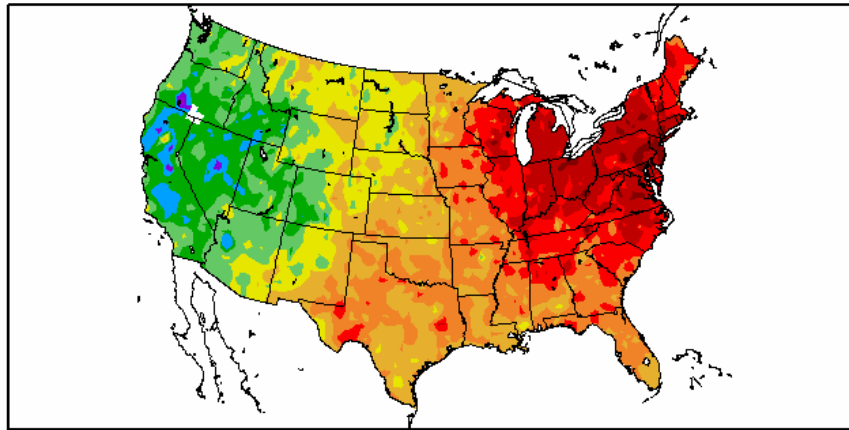


Generated 10/25/2007 at HPRCC using provisional data.

NOAA Regional Climate Centers

Not many exceptionally dry spots across the country this month, except for the Carolinas. Parts of the Mid-West and Gulf Coast regions experienced more precipitation than normal.

Departure from Normal Temperature (F)  
10/1/2007 - 10/24/2007

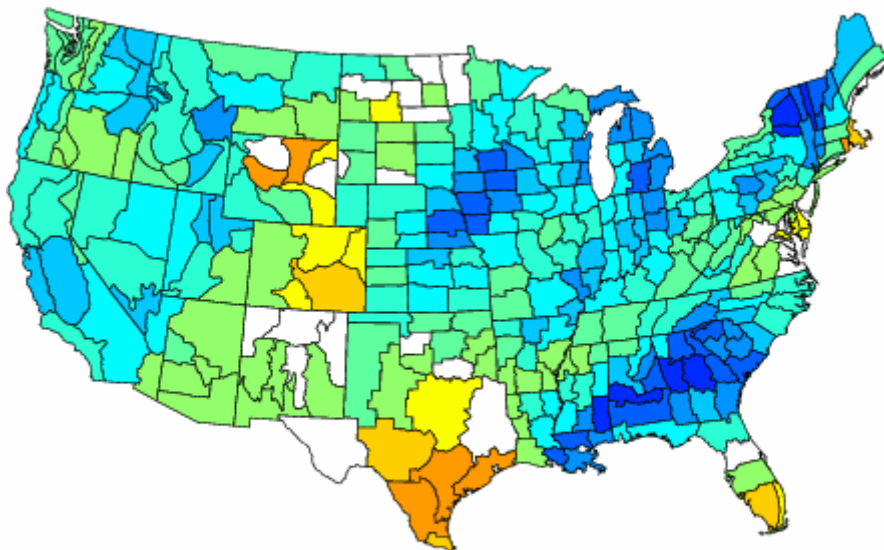


Generated 10/25/2007 at HPRCC using provisional data.

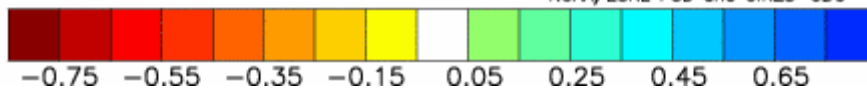
NOAA Regional Climate Centers

Everywhere east of the Mississippi River saw temperatures well above normal during October. In areas west of the Rockies, temperatures were below the norm.

Composite Standardized Precipitation Anomalies  
Versus 1895–2000 Longterm Average  
Nov to Dec 1900,1918,1927,1931,1941,1947,1948,1950,1971,1973  
1984

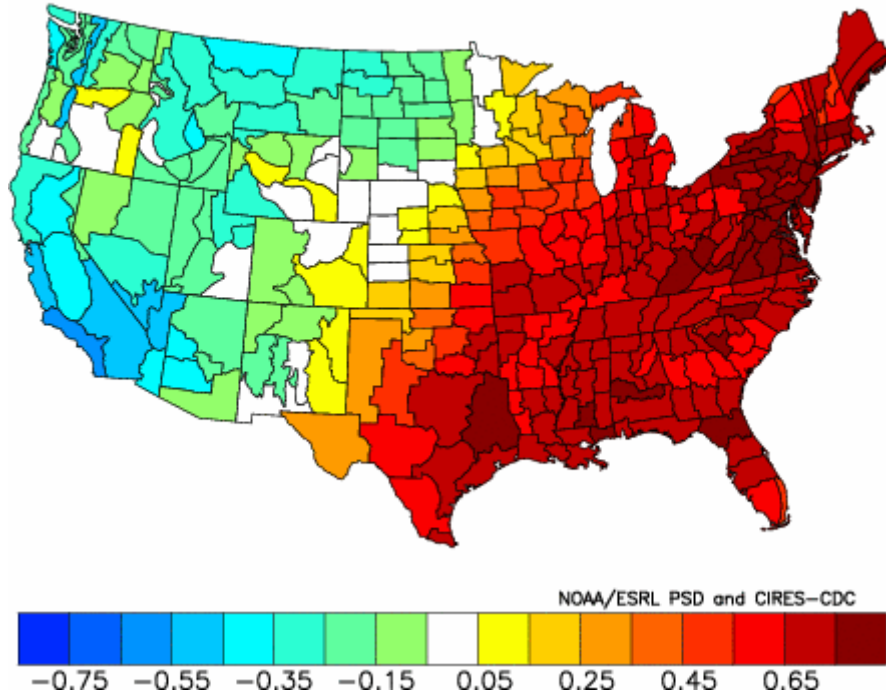


NOAA/ESRL PSD and CIRES-CDC



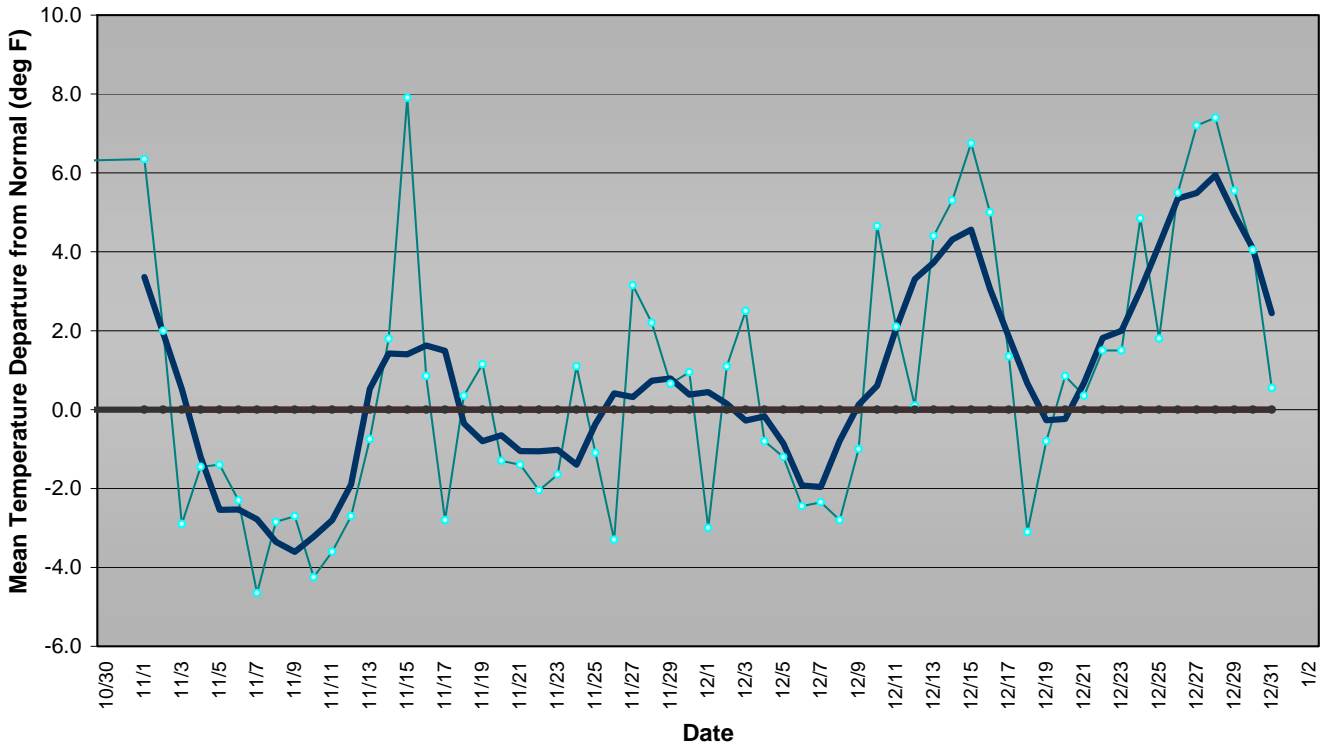
Years with similar weather conditions in October typically yield a wet eastern half of the country. Parts of Texas and the Rocky Mountains could be a bit drier than normal.

Composite Standardized Temperature Anomalies  
Versus 1895–2000 Longterm Average  
Nov to Dec 1900,1918,1927,1931,1941,1947,1948,1950,1971,1973  
1984

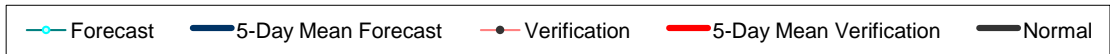
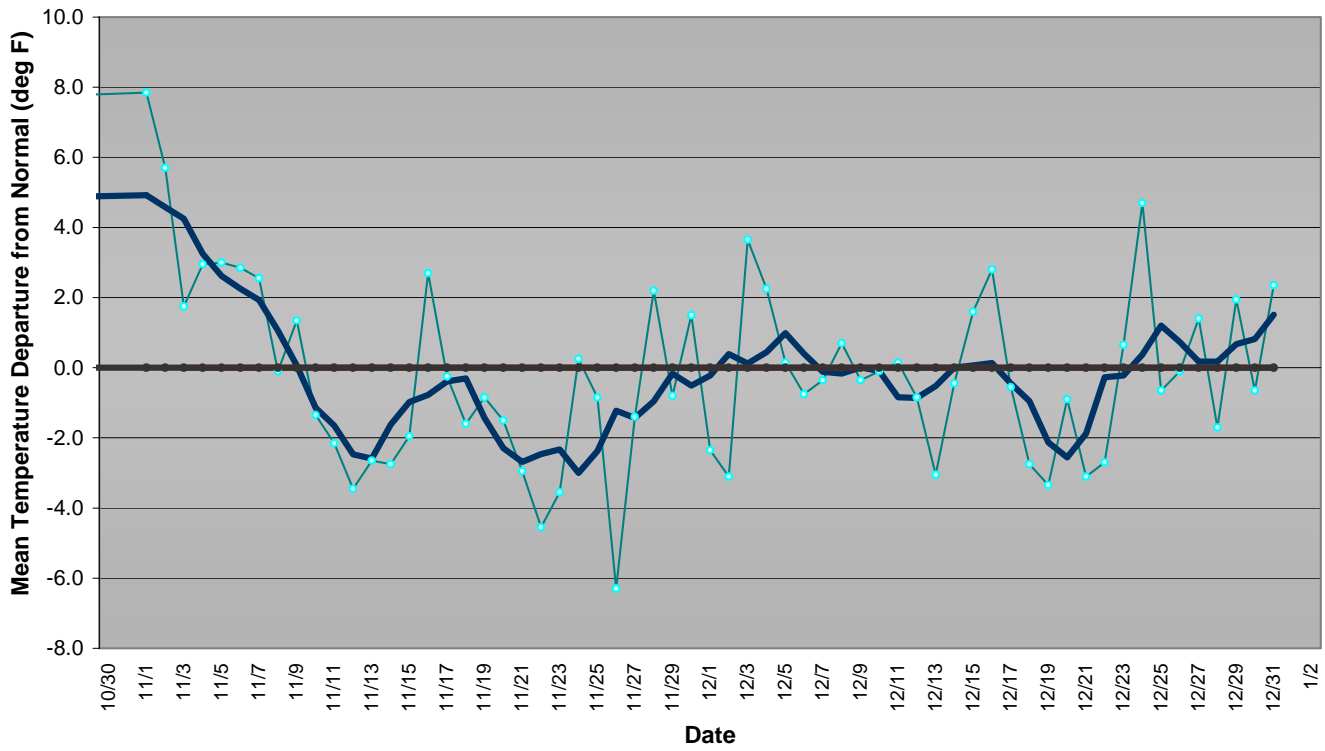


As was the case in October, the eastern United States should expect temperatures well above normal in the coming months. Areas in the west should also expect conditions to be cooler than normal.

### Western Pennsylvania Temperature Forecast November - December 2007



### Central Pennsylvania Temperature Forecast November - December 2007



### Eastern Pennsylvania Temperature Forecast November - December 2007

