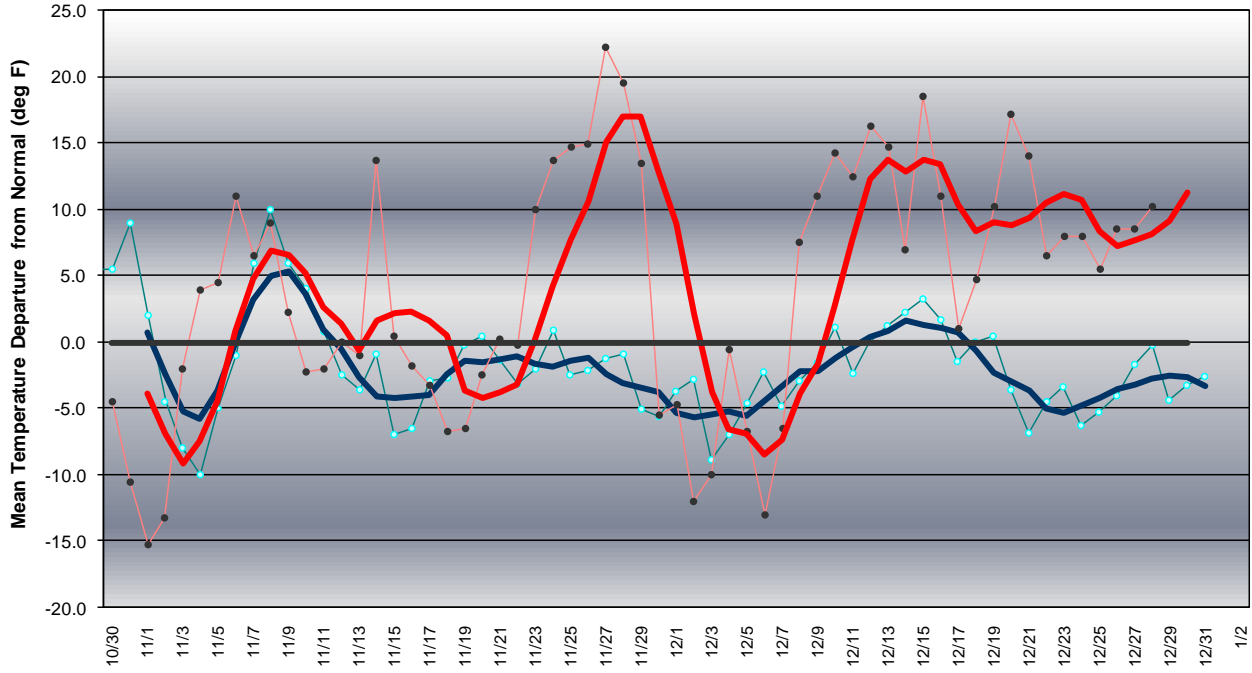


Long Range Forecast: November – December 2006

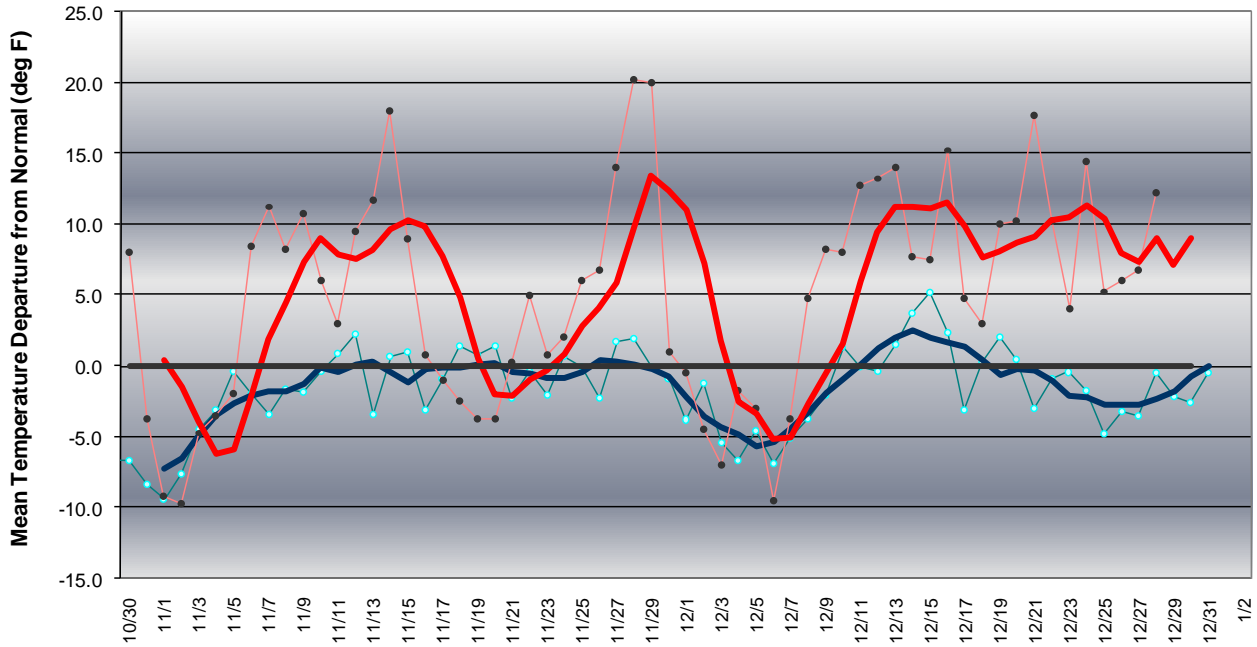
Western Pennsylvania Temperature Forecast November - December 2006



Mean Average Error: 7.3 F -- Mean Departure from Normal: 7.0 F



Central Pennsylvania Temperature Forecast November - December 2006



Mean Average Error: 6.2 F -- Mean Departure from Normal: 6.5 F



Eastern Pennsylvania Temperature Forecast November - December 2006

