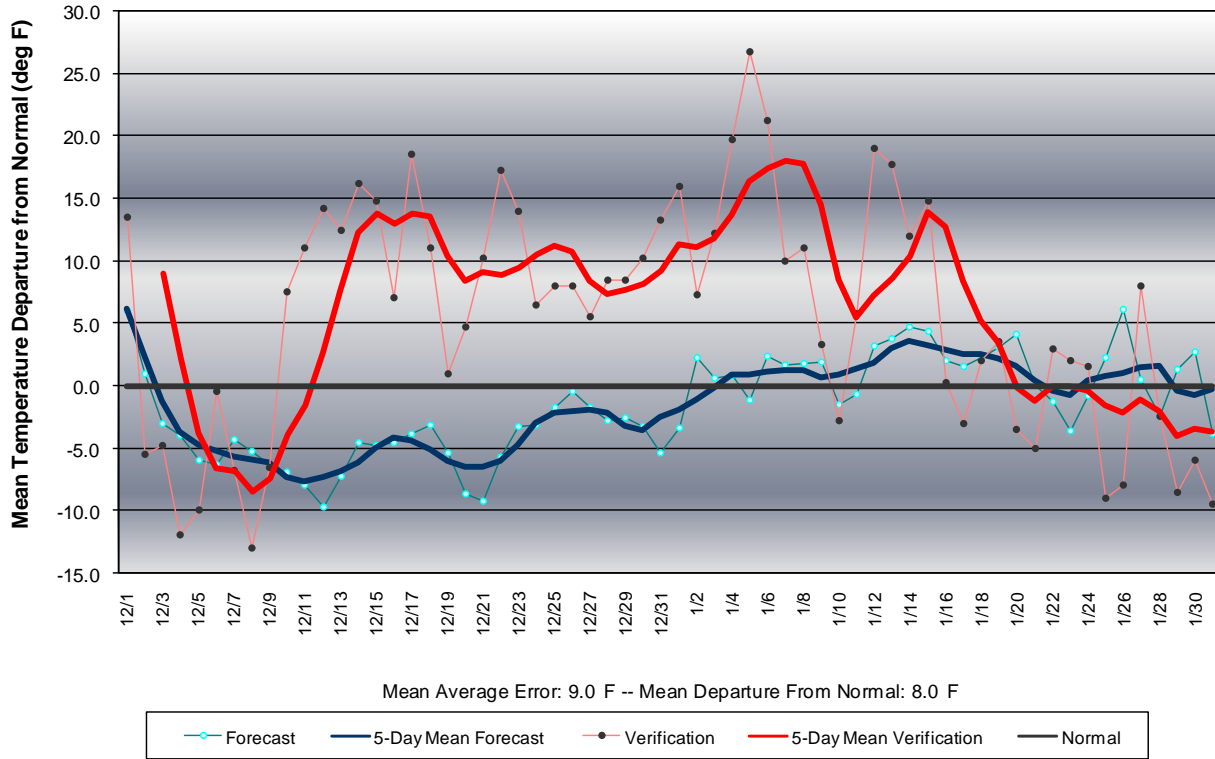
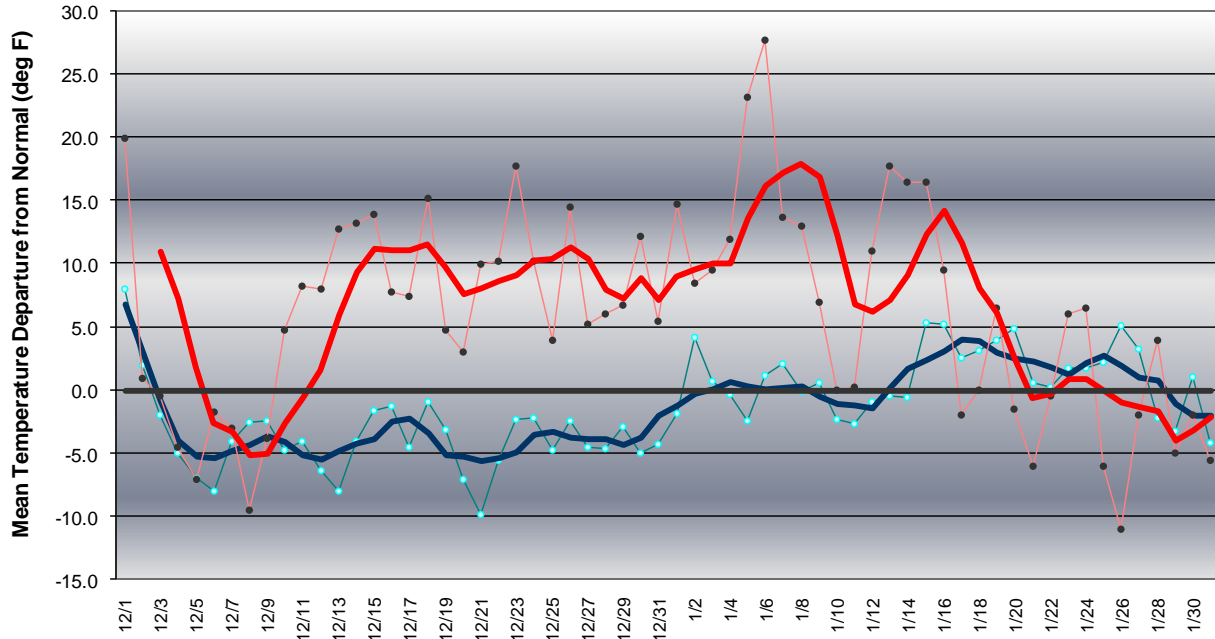


Long Range Forecast: December 2006 – January 2007

Western Pennsylvania Temperature Forecast December 2006 - January 2007



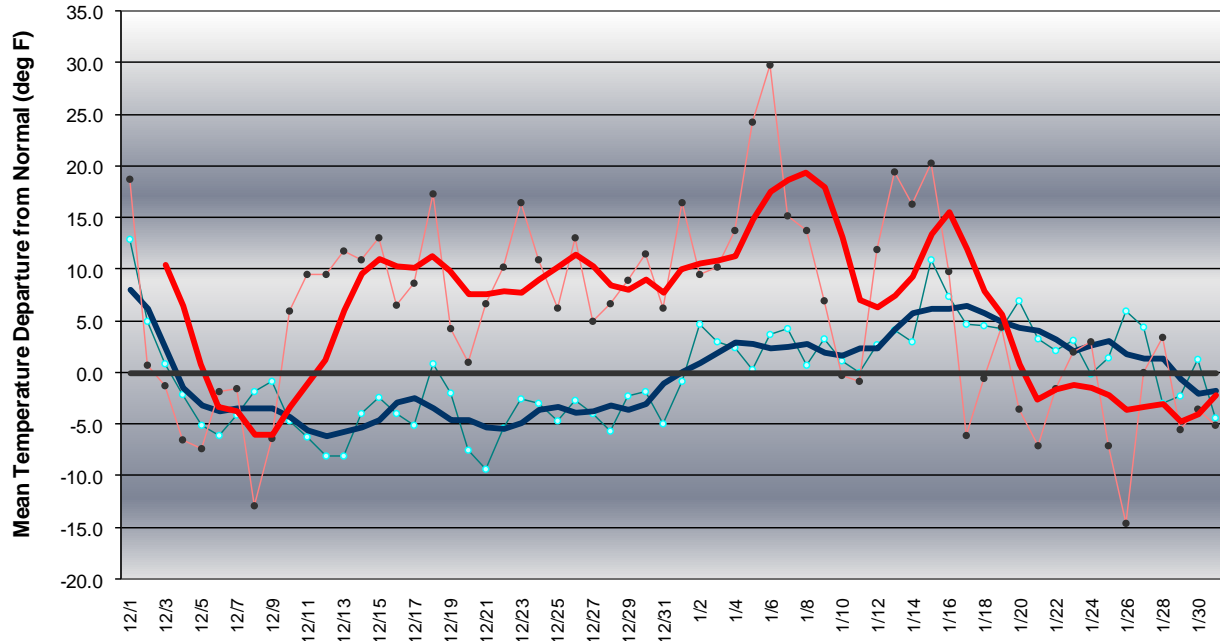
Central Pennsylvania Temperature Forecast December 2006 - January 2007



Mean Average Error: 8.6 F -- Mean Departure From Normal: 7.4 F



Eastern Pennsylvania Temperature Forecast December 2006 - January 2007



Mean Average Error: 8.4 F -- Mean Departure From Normal: 7.7 F

